



Crime happens

Reduce Crime, Save Money with Local DNA Databasing

NMS Labs partners with SmallPond™ to provide law enforcement with a complete property crimes testing and local DNA databasing solution. SmallPond™ is a web-based, DNA profile matching technology that enables DNA profiles to be uploaded into a local database. DNA profiles are stored and compared with reference samples from suspects and with other unsolved cases to link a scene to a suspect and to create new investigative leads.

The more samples agencies add to their database, the more powerful it becomes. Agencies can choose to share their results with local agencies to add even more power to the matching technology.



DNA samples are collected



DNA samples are processed at NMS Labs



DNA profiles are loaded into your SmallPond database



Ponds store profiles & handle matching scenarios with great flexibility & control



Pools group Ponds so you can share your database with other agencies for matching purposes



Match report notification provided by NMS Labs allows for rapid use of the investigative lead

Solving More Cases While Saving More Money¹

	Without DNA evidence in property crime cases	With DNA evidence in property crime cases
Years sentenced	1.5 years 	14 years
Amount saved in stolen property and police time	N/A	\$500,000 in 2 years

¹ Banda, P. Solomon. (10/20/2008). Police Use DNA to Solve Everyday Property Crimes. USA Today. http://usatoday30.usatoday.com/news/nation/2008-10-20-3407156810_x.htm

LOCAL DNA DATABASING

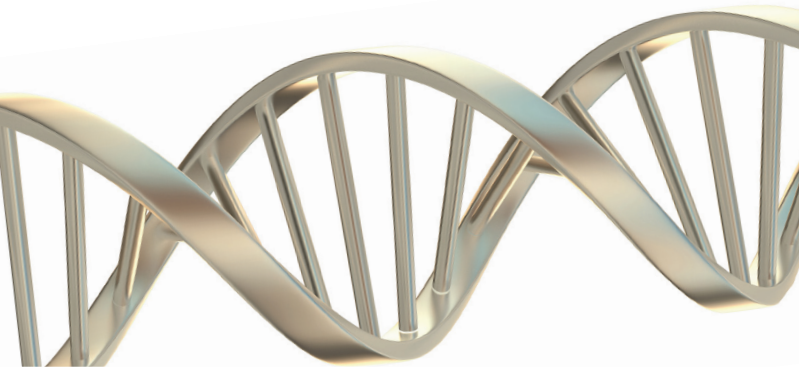
FOR LAW ENFORCEMENT,
ATTORNEYS AND
PROFESSIONAL INVESTIGATORS

www.nmslabs.com

Local DNA Databasing Benefits:

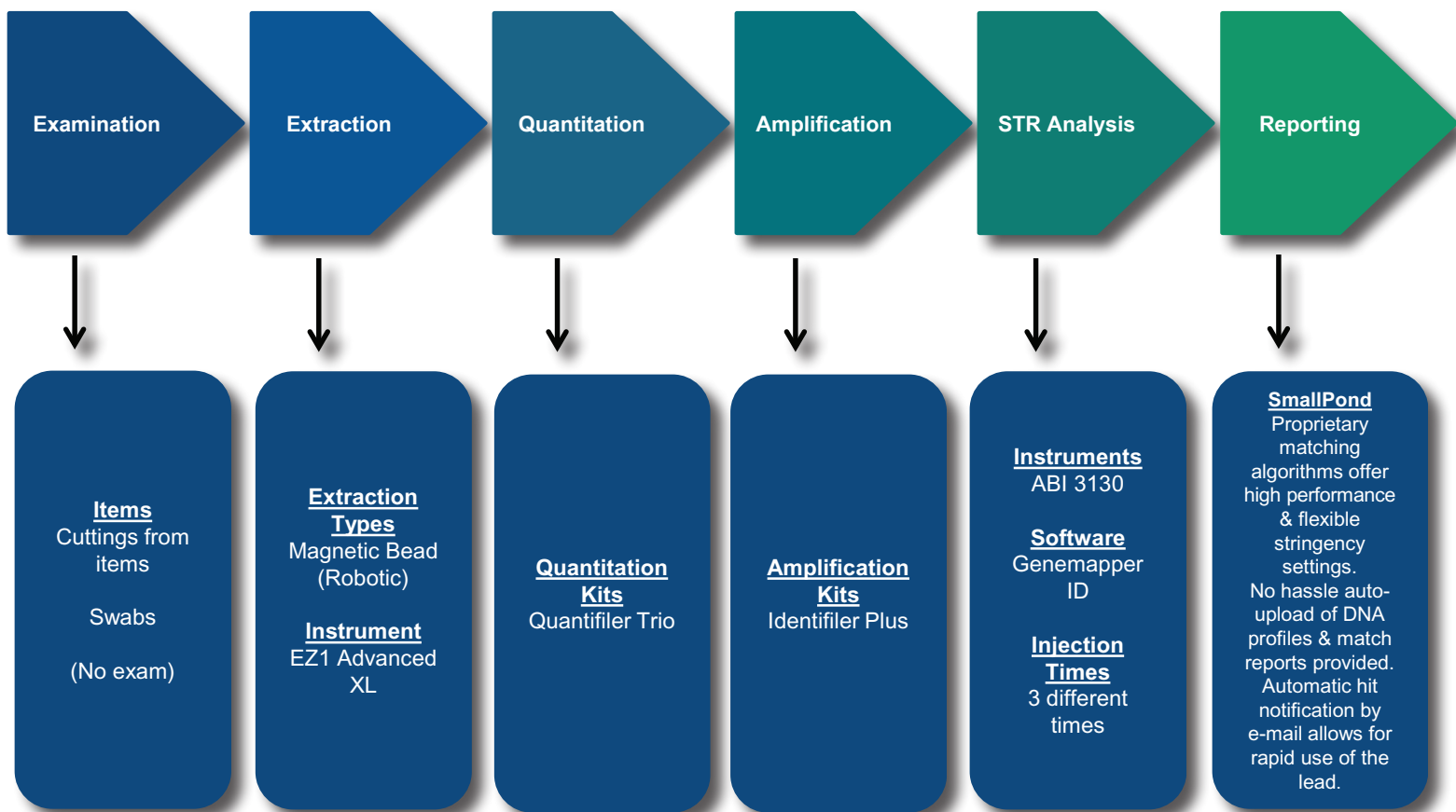
- Leads to higher rates of indictment, guilty verdicts, plea bargains and prison sentences
- Link otherwise unrelated cases and persons of interest, including unsolved cold cases
- Unique CODIS-like functionality to use in conjunction with CODIS





**SOLVE MORE CASES WHILE
SAVING MORE MONEY—THE NEXT
GENERATION OF POLICING.**

NMS LABS DATABASING WORKFLOW GUIDE



DNA SERVICES

PROPERTY CRIME + LOCAL DATABASING

DNA Analysis, Property Crime – 7359SL

Testing includes extraction, quantitation and amplification of swabs or cuttings of evidence only. Upload to **SmallPond™** database included. The database must be set-up prior to testing. Forensic Casework tests can also be paired with SmallPond™ databasing; additional fees apply.

SEROLOGY

Blood, Saliva and Semen Identification

Testing identifies the type of bodily fluid present

FORENSIC CASEWORK

DNA Analysis, Autosomal STR (Casework) – 7300SL

NMS Labs' most comprehensive evidentiary test. Includes any sample type and case type (i.e. homicides, sexual assaults, cold cases).

DNA Analysis, Autosomal STR (Reference) – 7308SL

Develop a DNA profile from a reference sample of a known individual to then compare it to an evidentiary DNA profile

CODIS Data Pack – 7365SL

Supports the upload of results into CODIS

Call for a case consultation today!

800.522.6671

nmslabs.com

